



TRAILARMOR.COM
 839 HWY 2 CORINTH, MS 38834
 (662) 462-4222

Installation Instructions

Trail Armor 2015 RZR 900 S, 900 S EPS and 900 XC Rear Window TA010RWDS-RZR900S

Warnings and Product Liability Disclaimer

This product is intended to be used as a cosmetic accessory under normal equipment operation and should not be depended upon or used as a safety device. Manufacturer assumes no liability for personal injury or equipment damage as the result of use or installation of this accessory. User assumes all risk. User should carefully read all instructions prior to installation. All Trail Armor products are designed, engineered, and fit to new vehicles and their specifications. Damage, modifications, and extreme wear may cause and require modifications to the product and/or your vehicle to insure proper fitment.

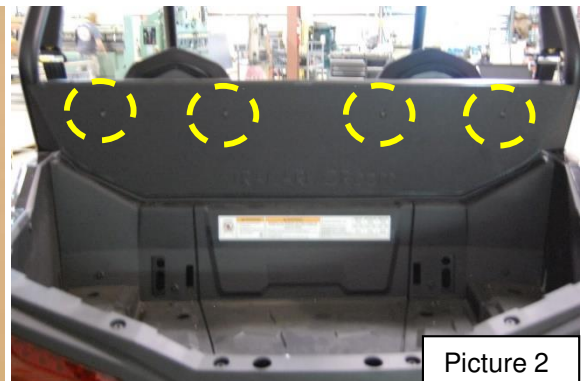


- A. Locate the black plastic lower panel. Place lower panel on a flat surface. Install the 44 1/2" pro-fit push on bulb seal on the curved end of the bottom panel. See Picture 1. Align the four slotted holes of the lower panel with the small holes in the harness bracket behind the headrest of the seats. Insert four supplied 1/4 -20 x 5/8" torx truss screws through the outside of the lower panel into the harness bracket. *Note: Push down on the lower panel so the holes will align up and the seal is snug with the body.* Start four 1/4 -20 nylock nuts over screw ends. Tighten installed hardware. See Picture 2.

Picture 1

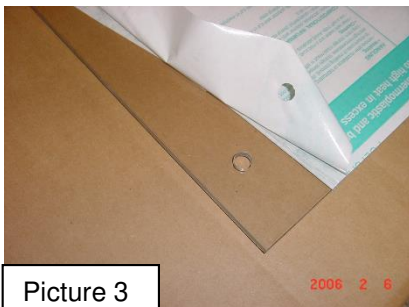


44 1/2" Pro Fit Bulb Seal

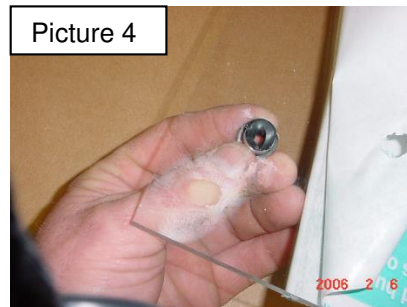


Picture 2

- B. Carefully lay upper windshield panel on flat surface; peel back the protective sheeting around the outer edges only enough to reveal the pre-drilled mounting holes. Do not peel the protective sheeting completely at this time! See Picture 3.



Picture 3



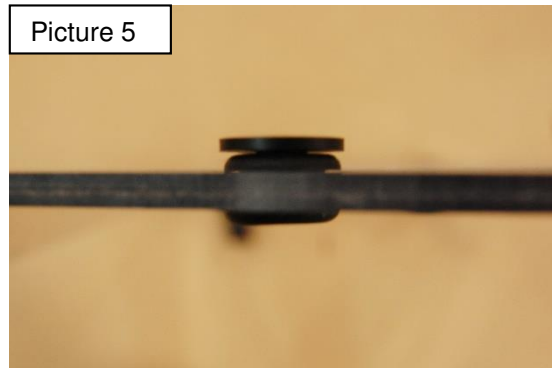
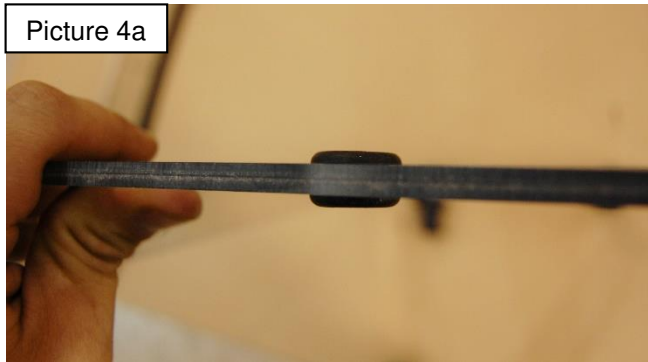
Picture 4



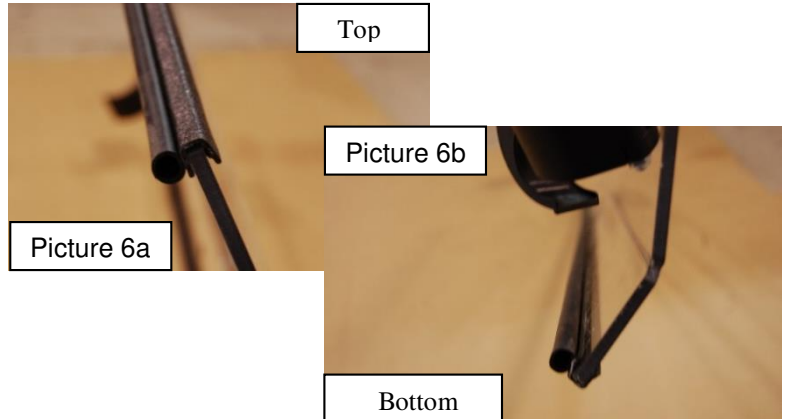
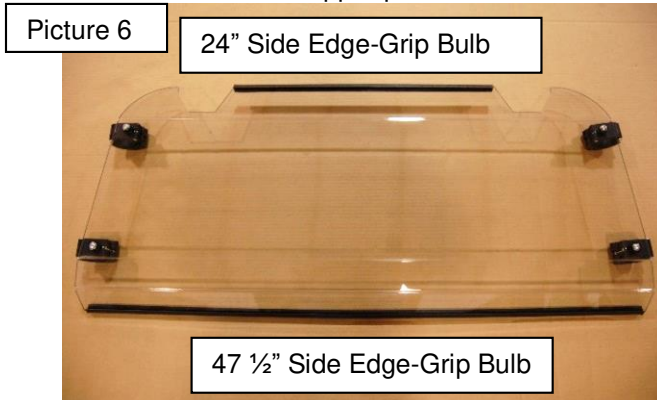
TRAILARMOR.COM
 839 HWY 2 CORINTH, MS 38834
 (662) 462-4222

Installation Instructions

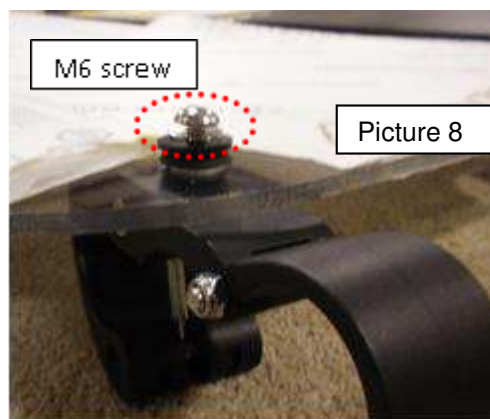
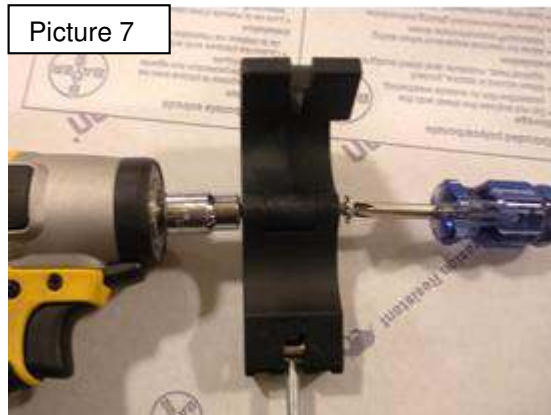
- C. Insert supplied rubber grommets into the pre-drilled holes. See Picture 4. Properly installed, the grommets' shoulder edges are uniform on both sides of the windshield. See Picture 4a.



- D. Place large black plastic sleeve spacers with flanged edge into each rubber grommet inserted in the windshield panel. See Picture 5.
- E. Locate the 47 1/2" side edge-grip bulb seal. Install this push-on edge trim gasket to the bottom edge of the upper panel so that the bulb is facing toward the vehicle when the upper panel is installed. Roll on by hand. Locate the 24" side edge-grip bulb seal. Install it to the top portion of the upper panel so that the bulb is facing toward the vehicle when the upper panel is installed. See Picture 6, 6a, and 6b.



- F. Discard rectangular rubber adapter pad that comes with each fast clamp. You will not need these adapter pads. Tighten hinge joints on all Trail Armor Fast Clamps enough to where the screws grab the nylock nuts but the clamps will still freely open and close. See Picture 7.





TRAILARMOR.COM
839 HWY 2 CORINTH, MS 38834
(662) 462-4222

Installation Instructions

- G. Install Trail Armor Fast Clamp with the hinge tightened in step F to the inside/interior of the upper panel. Secure with M6 screws. See Picture 8. Tighten until rubber grommet inside the windshield's pre-drilled holes has pressure. **Do not overtighten! If you overtighten, you will pull out the brass insert and break the black spacer with the flanged edge and/or crack the upper panel.**
- H. With assistance, position upper panel onto the rear of the roll cage so that the upper panel's lower side bulb seal seals against the top of the lower panel. Clamp into place as shown in Picture 9 – 12. Rotate the fast clamp's camlock clockwise to adjust tension on your roll cage. Secure Fast Clamps. See Picture 13 for finished install.

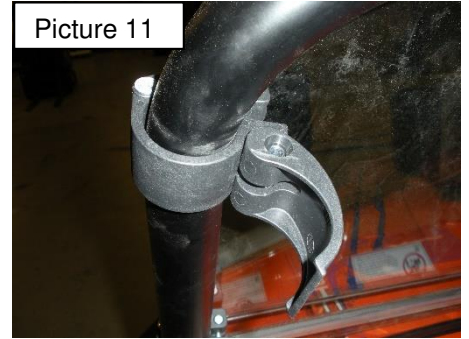
Picture 9



Picture 10



Picture 11



Picture 12



Picture 13



Final Install