



# Polaris Turbo S (Factory cage)

## Cooler Mount INSTRUCTIONS



**PARTS:** (4) 8-32X5/8 SS FLAT HEAD BOLTS (2) LATCH RETAINER CLIPS  
(4) 8-32 THIN NYLOC NUTS (2) LATCHES (2) 1 RH 1 LH BASE MOUNT  
(2) SAFETY LOCK RINGS (2) COOLER HOOK MOUNT

**FITMENT:** 18-current Polaris Turbo S with factory cage

### STEP 1:

Use 1 of the 8-32 bolt and nyloc nut to bolt the latch retainer clip to the cooler hook mount. Most coolers will use the bottom most hole in the hook mount. Tighten up so that the clip will still rotate. Rotate the clip to the side and slip the latch under the clip, and rotate back to the center. Tighten the bolt all the way down at this time. Do this for both sides.



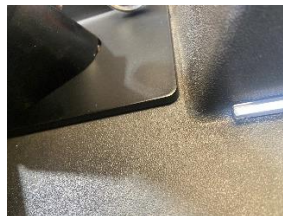
### STEP 2:

Using 3 of the 8-32 bolts and nyloc nuts, bolt the latch to the base mount in the slotted holes so that the latch is on the side of the base that you can correctly read the logo. The slots are so that the latch can be adjusted to different coolers. For most coolers 26QT and under, sliding the latch all the way furthest from the logo will be correct. For the Yeti Tundra 35, The latch will be close to the center of the slots.



### STEP 3:

On the rear of your machine, remove the 2 bolts from the bottom rear underneath the plastics that hold the rear most bar brackets in place. Wiggle the bracket to raise up enough to slide the cooler mount underneath it lining up the holes. You will have to lift up on the brace to slide the brackets back in place over the cooler mount. Once in place, reattach the factory bolts from underneath and tighten up.



### STEP 5:

Adjust the threaded end of the latch so that when the latch is locked, your cooler is secure. Once the latch is adjusted and cooler is secure, be sure to use the supplied lock pin. The lock pin is to ensure the latch can't come loose while riding.

**THANK YOU FOR CHOOSING L&W FAB PRODUCTS!**